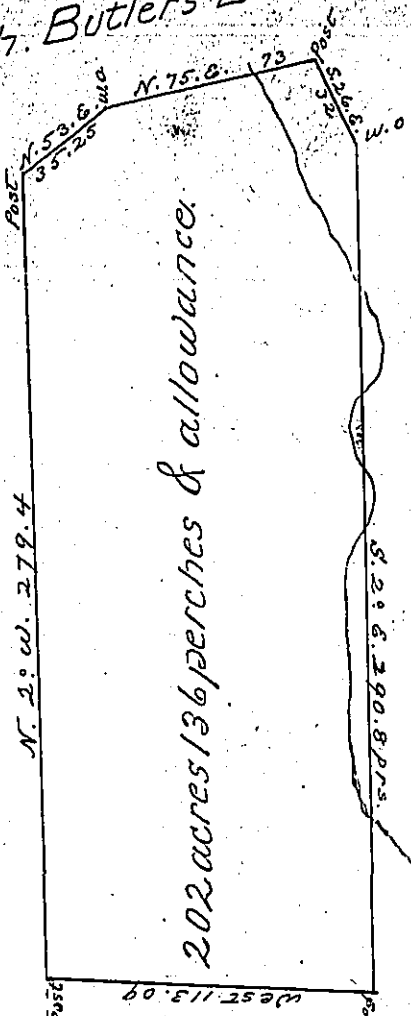


Gen. Rich. Butler's Land

William Powell's Land

John Erwin's Land



Sarah Robinson  
B17-211

Draft of a Tract of Land situated in Penn Township Allegheny County Pa. containing 202 acres and 136 per and allowance of six p.c. for roads &c. Surveyed for James Vermer June 18th. 1869 being part of a larger tract of 316 acres 111 perches and allowance originally surveyed in pursuance of a warrant granted to Sarah Robinson dated August 29th. 1785.

R. L. McCully C.S.  
To Jacob M. Campbell Surveyor General

IN TESTIMONY that the above is a copy of the original remaining on file in the Department of Internal Affairs of Pennsylvania, made conformably to an Act of Assembly approved the 16th day of February, 1833, I have hereunto set my Hand and caused the Seal of said Department to be affixed at Harrisburg, this first day of October 1901

*James W. Little*  
Secretary of Internal Affairs.